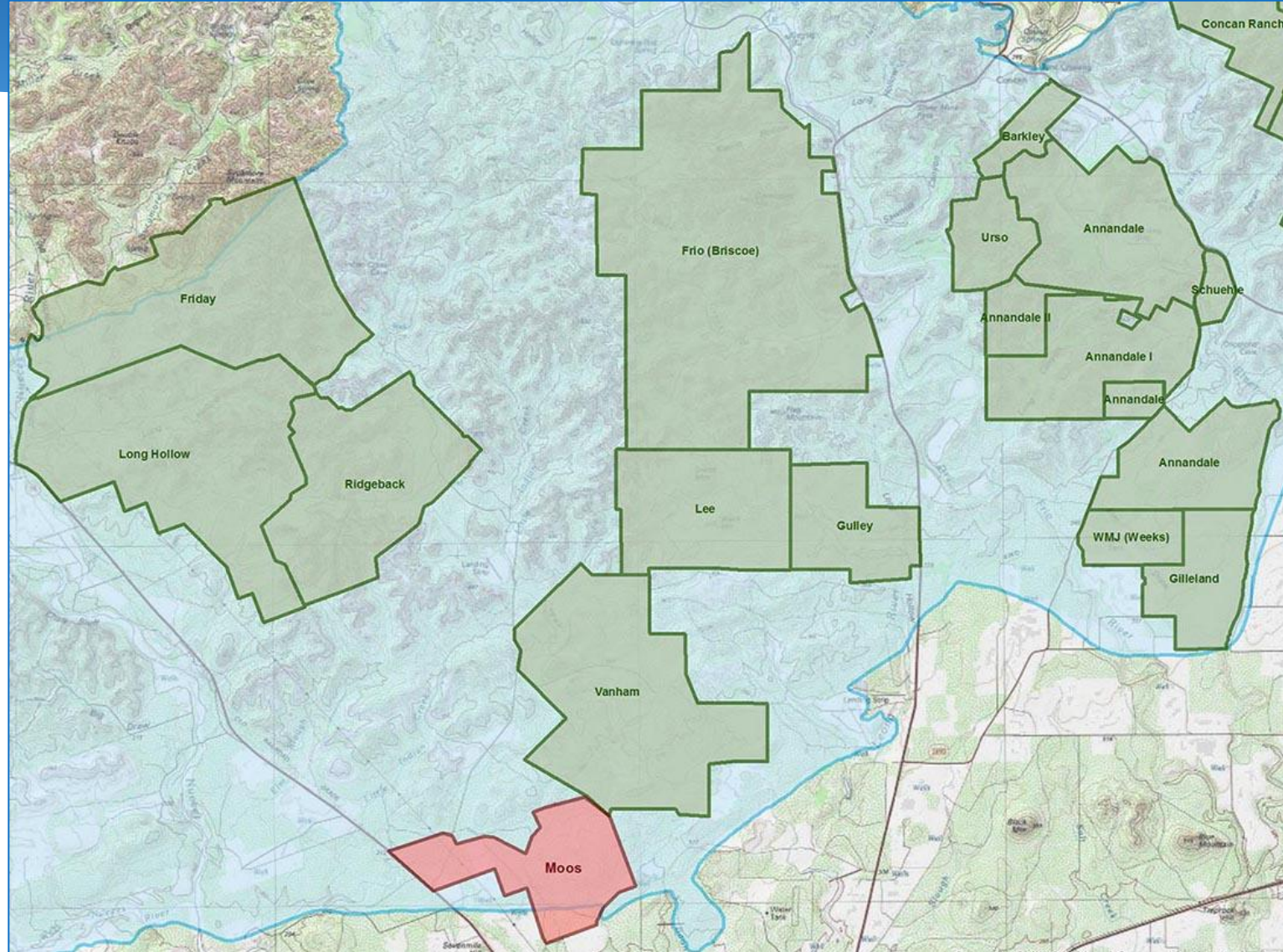




Moos Ranch



Moos Ranch (2,894 Acres) Uvalde County





Moos Ranch (2,894 Acres) Uvalde County

- North of Uvalde, adjacent to Vanham Ranch (SAWS easement)
- Top 50% in SET model
- Previously considered by CAB; EAA ranked as a high priority in 2008 geological evaluation
- GA reports high to very high water quantity and high water quality benefits; appraisal completed
- Owner offering phased CE acquisition opportunity
- **Requesting Final Approval**

